

W 1/4 COR SEC 5
T17N, R62W

"P-3"

062632

RECEIVED
LARAMIE COUNTY
CHEYENNE, WY.

CERTIFIED LAND CORNER RECORDATION,

OCT 5 PM 3 01

DESCRIPTION OF CORNER EVIDENCE FOUND, AND ORIGINAL RECORD (If known)

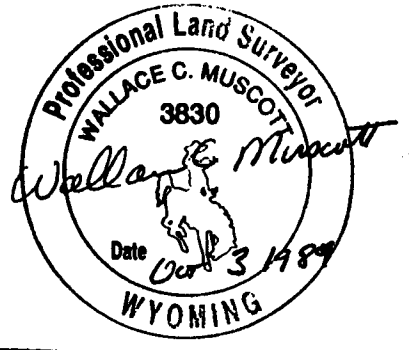
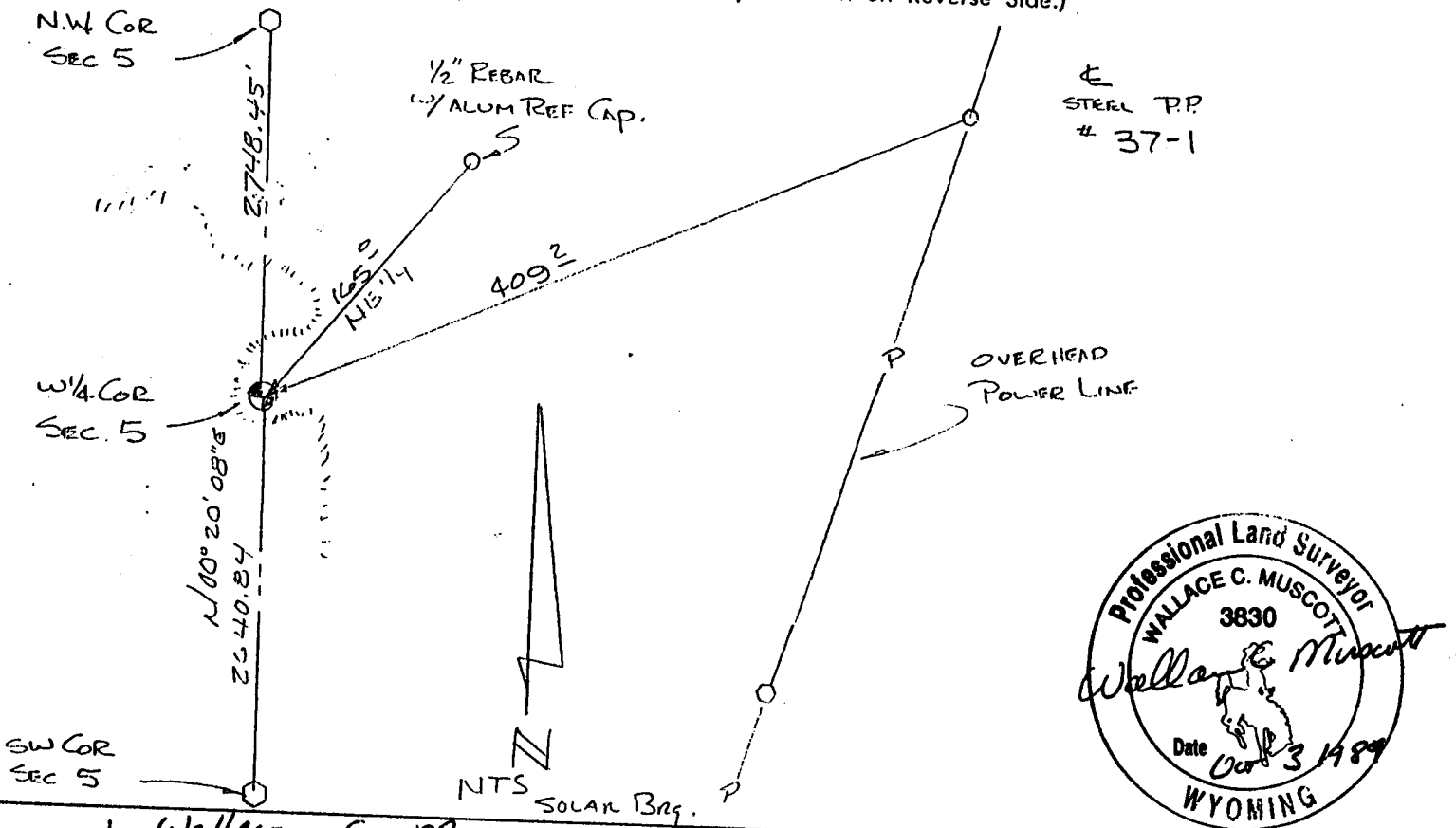
FOUND NO EVIDENCE OF ORIGINAL CORNER OR ANY RESURVEY.
THE ORIGINAL GLO CALL WAS A 16X12X12 SANDSTONE. CALLED THE
CORNER LOST AND RESET BY SINGLE PRO RATE.

DESCRIPTION OF MONUMENT AND ACCESSORIES ESTABLISHED
TO PERPETUATE THE ORIGINAL LOCATION OF THIS CORNER:

AT THE CALCULATED POINT FOR CORNER, SET A 1/2" X 30" REBAR
WITH A CORPS OF ENGINEERS BRASS CAP IN A LIMESTONE OUTCROPPING.
REFERENCED AS SHOWN BELOW,

SKETCH, WITH COURSE AND DISTANCE TO ADJACENT CORNER IF DETERMINED IN THIS SURVEY.
(May Sketch or Paste Reproduction on Reverse Side.)

AUG. 23 1989



I, Wallace C. Muscott certify that I have carefully performed or reviewed the work
done on the diagrammed corner as reported on this recordation form and approve the same.

Wallace C. Muscott 3830
Signature of Surveyor Registration No.

STATE OF WYOMING,
Office of Clerk and Recorder,
County of _____

This "corner record" was filed for record on the _____ day of _____, 19____, was noted
on the cross-index plat and is assigned page No. _____, in book No. _____.

County Official		
Cross Index No. <u>C-5</u>	T. <u>17N</u>	R. <u>62W</u> Mer.
_____	T. _____	R. _____ Mer.
_____	T. _____	R. _____ Mer.
_____	T. _____	R. _____ Mer.
_____	T. _____	R. _____ Mer.
_____	T. _____	R. _____ Mer.
_____	T. _____	R. _____ Mer.